



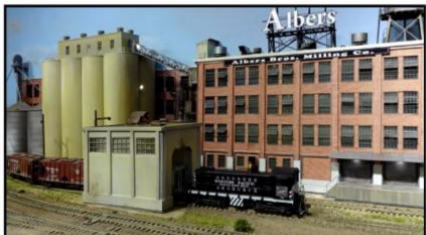
Volume 7, Number 3

March 2023

The NMRA's *Turntable* is a monthly publication which, like a railroad turntable, will lead you in several directions on the internet.

This e-publication is a collection of railroad and model railroad videos, podcasts, websites, and/or other information freely available on the internet that we think may be of interest to you. The NMRA claims no ownership of this information, nor do we endorse its creators or their websites. The *NMRA Turntable* will not promote individuals or their for-profit ventures.

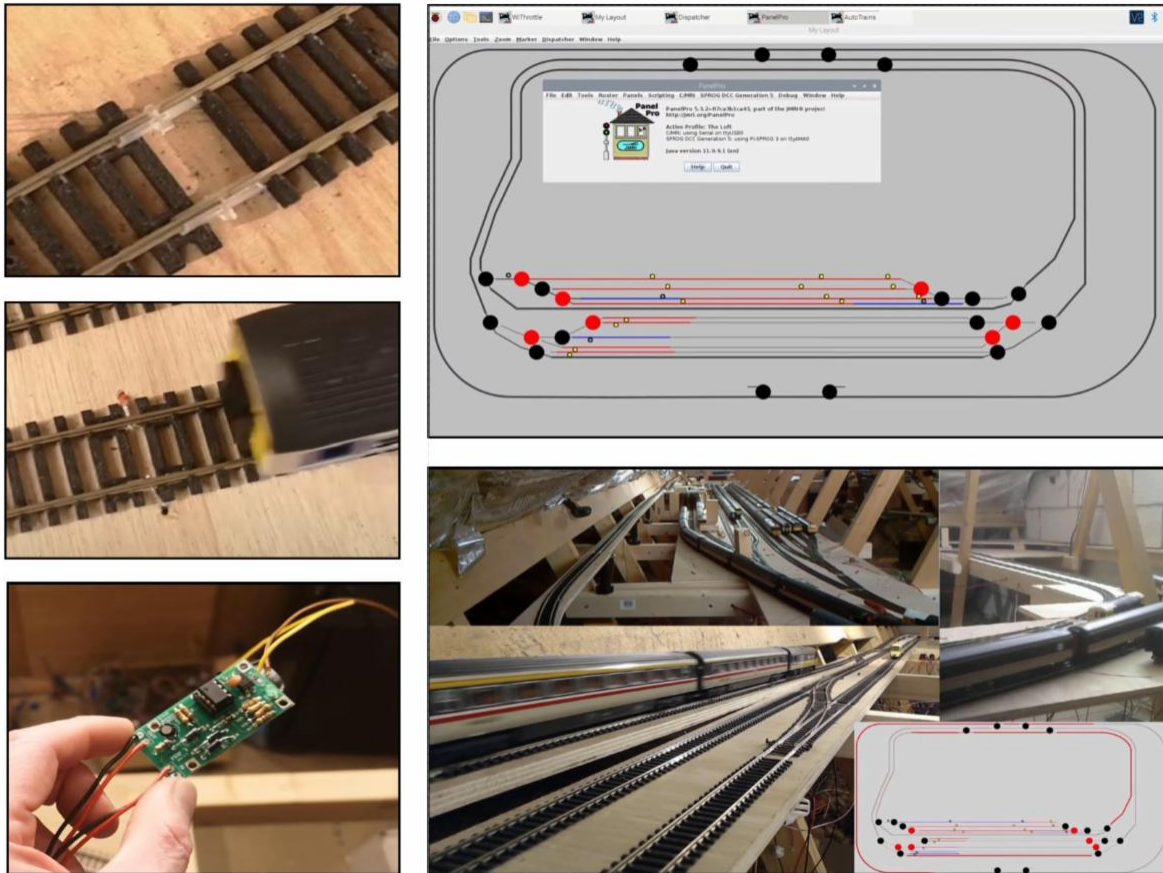
The Industrial Zone



[The Industrial Zone](#)

See methods for creating a credible industrial area to make a great scenic backdrop that supports mainline through-trains and switching of industrial sidings. This is on an HO layout, but the principals apply to other scales as well.

Block Detection Using Arduinos

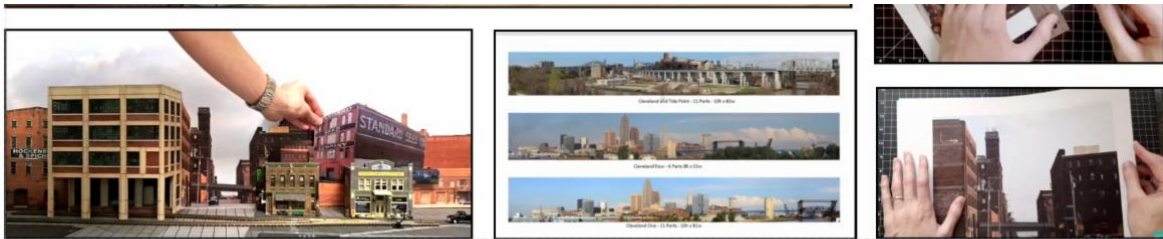


[Block Detection Using Arduinos](#)

Block detection is being added around this layout in preparation for the addition of signaling and automation. This is an explanation of what has been gone through and what was learnt along the way. There is a demonstration at the end of this video that shows all of it in action.

Make A Backdrop For Your Layout





[Make a Backdrop For Your Layout](#)

This video shows how to make a backdrop with skies, buildings and streets. For this *Dubai Trains* uses the database of images from LARC Rail Products. He explains how to create extra depth and how to build a composition. After selecting all of the images, he builds the actual background. Get ready for heaps of tips and tricks!

Using Servos For Turnout Control



SERVO TURNOUT CONTROL

presented at Railway Modellers Meet of B.C. May 2019
By
Timothy J. Horton



Miniature Servos

What Are They?

Miniature servos are very small electric motors with a fixed rotation up to 180 degrees. The type used for various hobby applications such as radio-controlled models and robotics employ a sensor to indicate and control precise position.



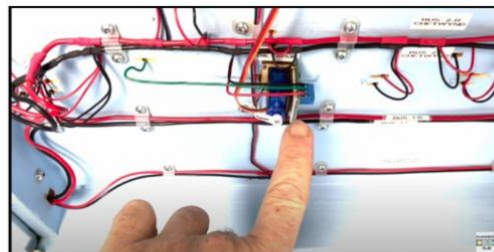
Miniature Servo (SG90)
size is 1.25" W x 0.5" x 1.125" H
servo lead is approximately 7" with a modular connection for the decoder (mounting bracket & wire not illustrated)

How Are They Controlled?

In model railway applications, servos are combined with drivers/decoders to provide actuation and control of turnouts, signals, and other animated features on a layout. The decoders can be connected to a layout's DCC system for remote operation from a throttle or wireless device.



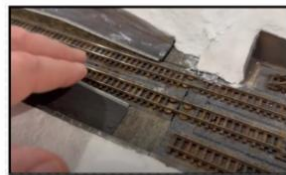
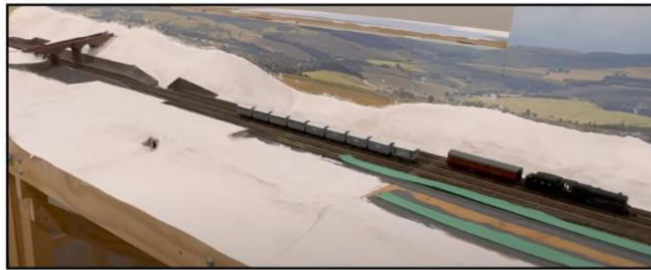
Singlet II Servo Driver/Decoder
size 1.25" x 1.25"
programming buttons
status LEDs (bi-colour)
modular connection for servo
terminal block for feeder wires
DCC capable



[Using Servos For Turnout Control](#)

This tutorial offers a look at using miniature servos to control turnouts, and how to actuate them from control panels. Join *Timothy J. Horton* for an alternative on how to control turnouts!

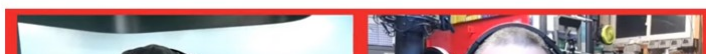
Crosby Garrett N Gauge Model Railway



Crosby Garrett N Gauge Model Railway

In this video, *Craig Myton* gives an overview of the works carried out over the past couple of weeks while he waited for the custom windows for the Goods Shed and Station Master's House. The video includes a look at the scenery, building up the hills with Sculptamold and creating rock castings.

Amazing Model Railroad Scenery With Tim Klimoski & Tom Johnson





[Amazing Model Railroad Scenery](#)

On this Second Section Podcast, *Tom Klimoski* and *Tom Johnson* join Mike and Andy to share their pro tips on how to create AMAZING scenery for your model railroad.

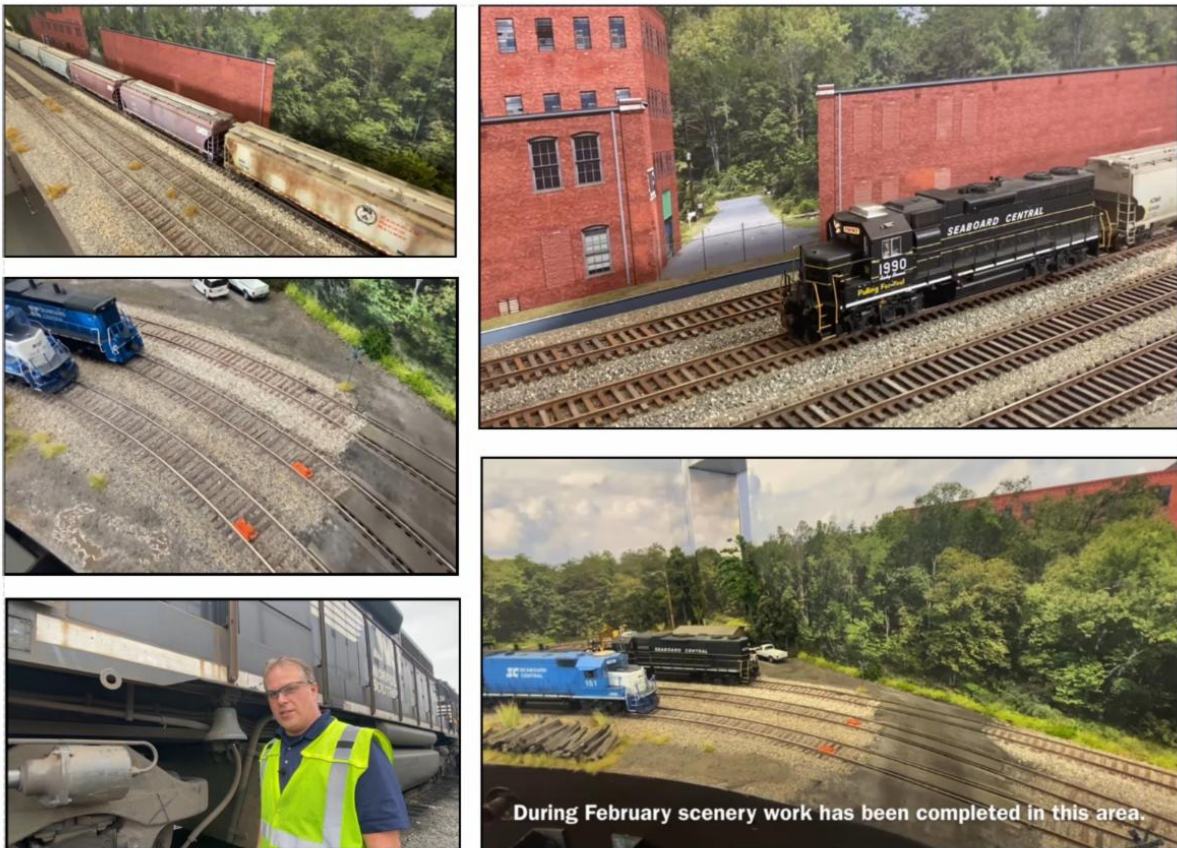
Building a Structure From Disney's Past



[Building a Structure From Disney's Past](#)

This week, *Dave of Thunder Mesa, Studio* returns to the Little Mining Town of Rainbow Ridge to build Pat Casey's Last Chance Saloon! His version of Rainbow Ridge is an homage to the original town that once stood near the load area for Disneyland's long gone Mine Train thru Nature's Wonderland attraction. Some of the structures still survive in the Big Thunder queue, but this one has sadly passed into Yesterland. Here Dave uses the same plans and parts that he used to build the Dead Eye Saloon in Gruesome Gulch a few weeks back. This is a build with lots of unique details!

Seaboard Central Update

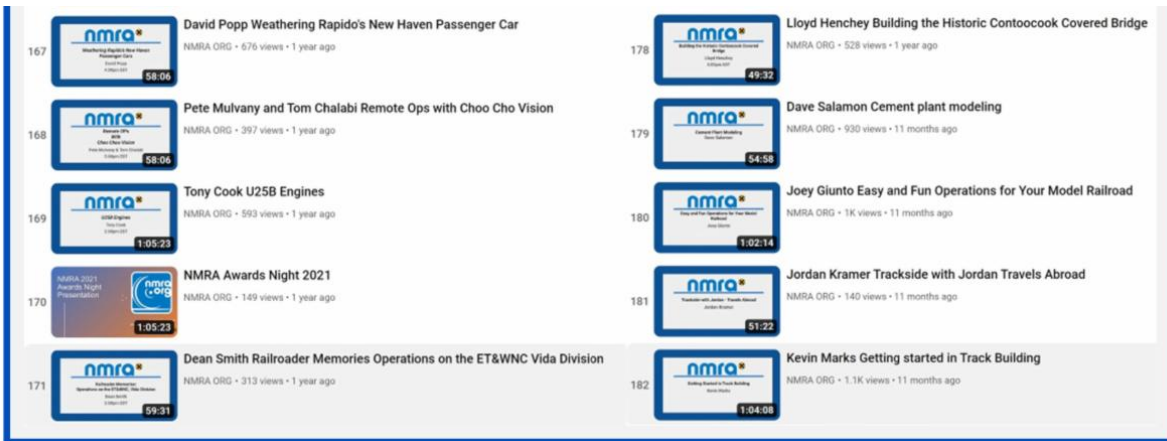


[Seaboard Central Update](#)

Tim Garland's Seaboard Central HO scale model railroad layout's March update features realistic prototype-based operations from a real locomotive engineer.

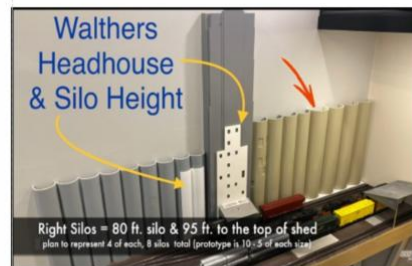
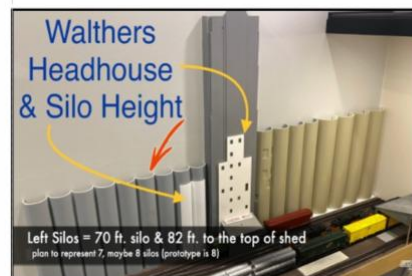
NMRA-X CLINICS

 166 1:05:23	Chrizandri Roth Railfanning Namibia NMRA ORG • 298 views • 1 year ago	 177 48:48	Ralph Renzetti Chipped Paint with Wax Paper NMRA ORG • 442 views • 1 year ago
---	---	---	---



These are but a few of the many **NMRAX** clinics available for viewing on our **YouTube Channel!**

Elevator Head House & Silos

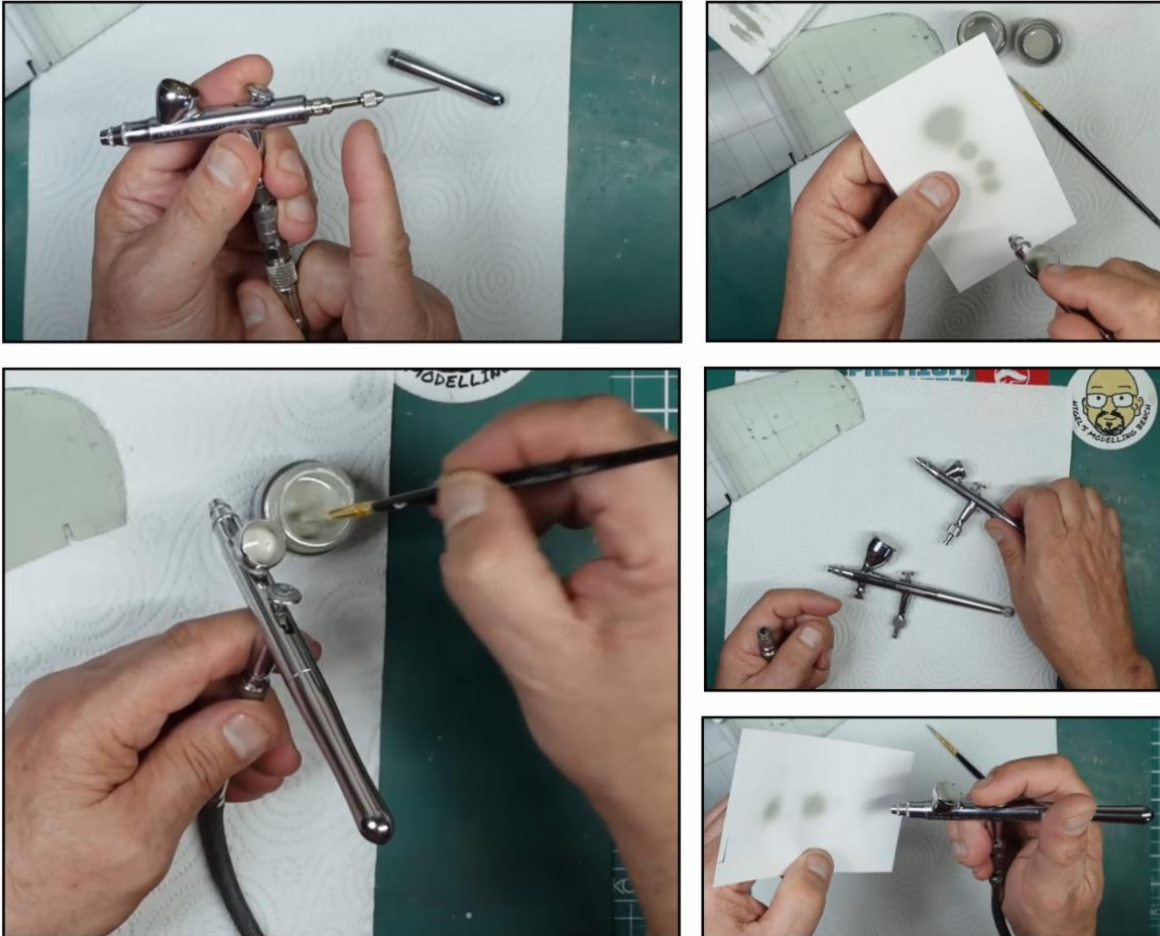


Elevator Head House & Silos

In this episode of *Soo The Milwaukee Road*, we go beyond the obvious, by looking outside the tunnel vision modeling. A unique look is taken at scaling an elevator for any scale...1" Scale might get nuts. Take a moment to go "BACK IN TIME" with Bob

Rivard and view his vintage 1986 SOO LINE era video footage. As well you learn a technique in adding a subtle detail to the railroad. In closing, tribute is paid to one of the great Twin Cities railroad preservationists.

Beginners Airbrush Help



[Beginners Airbrush Help](#)

A great question on one of *Nigel's* previous videos: "Can I spray LP over XF Paint?" Nigel tries that out. Also, some questions on Airbrushes are answered for the newer modelers out there.

Building a Sectional Layout





[Building a Sectional Layout](#)

Model Railroad Hobbyist roving reporter *Ken Patterson's* February "What's Neat This Month" is on Building a Sectional Layout, part 1 of 4.

Also covered is Bachmann's new releases.

Using PanPastels For Weathering

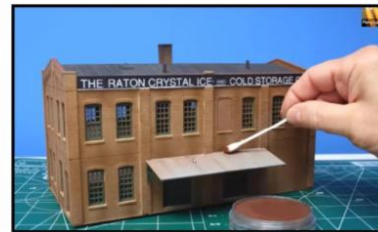
Using PanPastels
For Weathering
And MORE
About Weathering



Perry Lamb
February 18, 2023



1966 Division
Mid Central Region
National Model Railroad Association



[Using PanPastels For Weathering](#)

Perry Lamb, Superintendent, Piedmont Division, Southeast Region, NMRA, tells us all about "Weathering with PanPastels and MORE." This presentation covers many techniques, tools, and materials Perry uses when weathering model railroad rolling

stock, locomotives, and structures. Also included is all of the Q&A at the end of the presentation.

Vintage South Jersey Railroad Structures & Signals A to Z

Merchantville



Orston – Robert Long Photo



West Moorestown



Westmont – Haddon Avenue Bridge



Trenton 1952

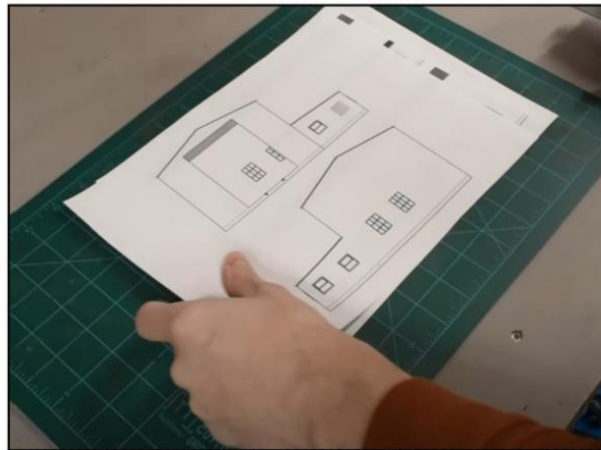
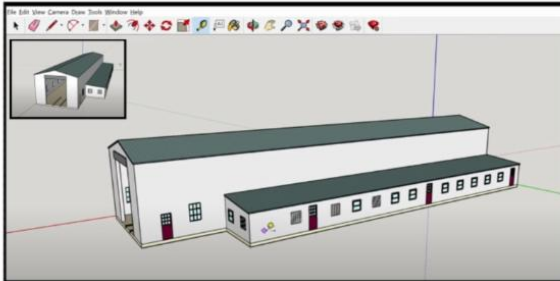
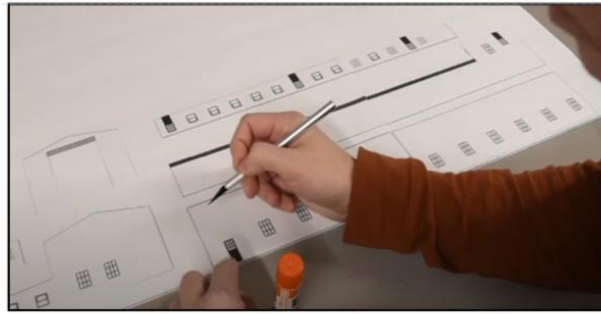


[Structures & Signals](#)

This 330-slide presentation includes railroad structures and signals found in locations all around southern New Jersey, in alphabetical order. Drawing on the work of numerous photographers and organizations, Chapter President *Dave Homer* and then-Vice President *Ron Baile* cover everything from the massive Delair Bridge to humble passenger shelters.

This presentation was recorded live at an October 18, 2021, virtual meeting on behalf of the Camden County History Alliance.

Diesel Service Facility Part 1




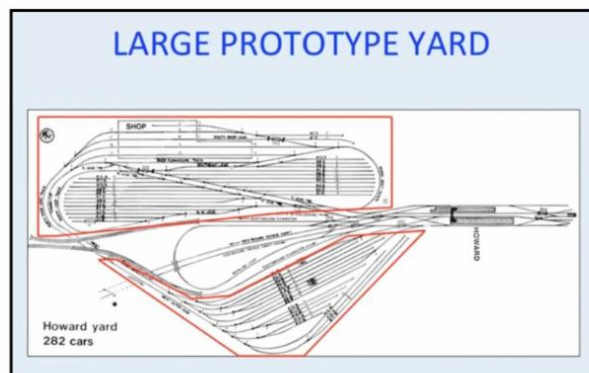
Modeling a Diesel Service Facility

This is the first of a series of videos where a diesel service facility is being constructed on a diorama for photographing HO Scale locomotives. The video covers the prototype that inspired the model, as well as creating the engine house mockup using Sketchup for exact dimensions, and foam core board for the mock model. After that, elements are planned as to where they will be placed on the diorama.

Yards & Yard Limits

HOW TO IDENTIFY YARD LIMITS

- Employee Timetable
 - Yard Limits Usually Identified between Mile Posts
- Warning/Advance Sign
 - Placed along the Main track in advanced of the Yard Limit
- Line Side 'YARD LIMITS' Marker
 - Placed along the Main track at the beginning and end of the Mile Post locations

BASIC YARD EXAMPLES

WP EMPLOYEE TIMETABLE

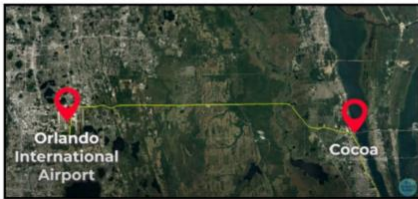
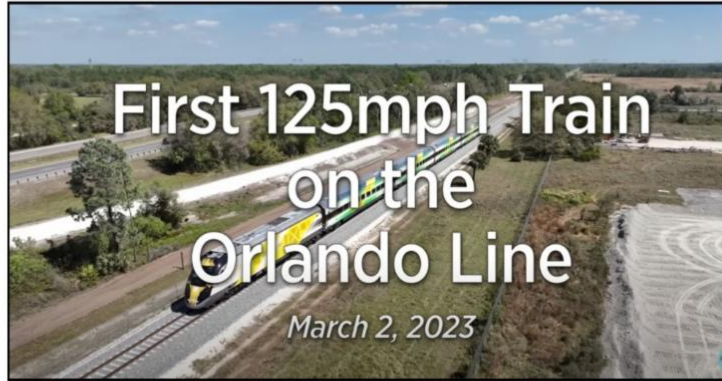
Eastward FOURTH SUBDIVISION Westward

- Class & Train Numbers
- Time

has to get on the road and hunt them down.

Plus, Danny learned a few things on this trip including some facts about the old Cross-Florida Barge Canal.

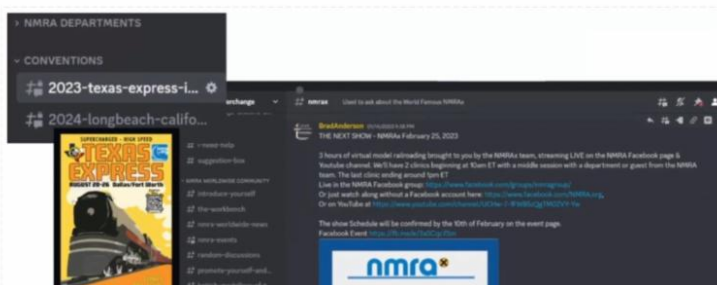
Brightline's Orlando Milestone



First 125mph Train on Orlando Line

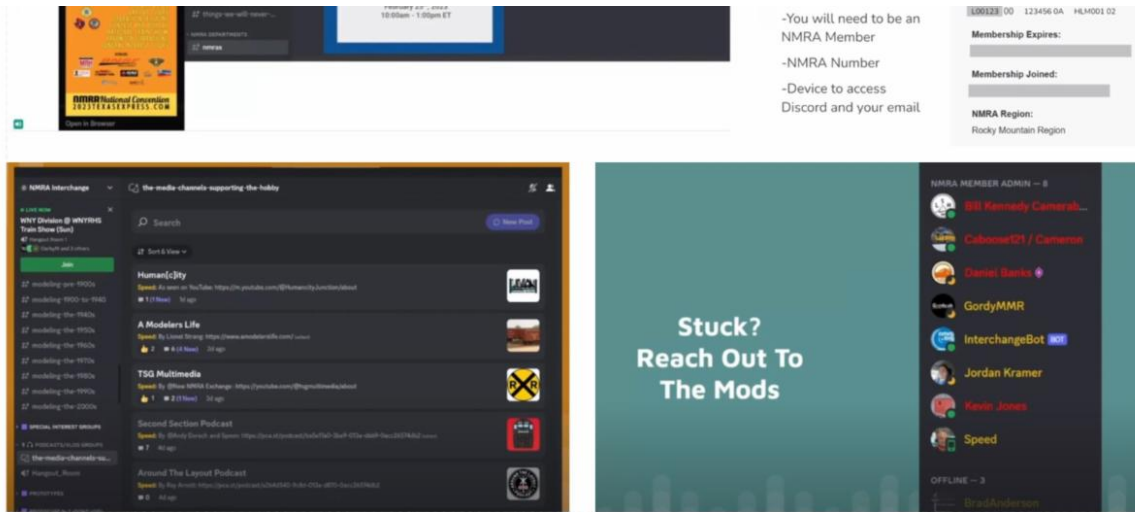
On March 2nd, 2023, Brightline ran their first test train at 125mph on a portion of the new Orlando Line. This is the maximum speed for this new line stretching from Orlando International Airport to Cocoa. This train made several trips at this high speed while also testing braking and acceleration.

Joining the NMRA Interchange



Prerequisites To Get In

NMRA Member ID:



Joining the NMRA Interchange

This was a presentation given at last month's NMRAX broadcast on how to join the NMRA Interchange.



The NMRA's Pacific Coast Region annual convention "["Rails By The River 2023"](#) is coming up in April. This event is being co-hosted by the region's Sierra Division and the Feather River Rail Society and will take place in Sacramento, California at the Courtyard By Marriott at Cal Expo. The convention will feature a [wide array of clinics](#) as well as [layout tours](#), and contests.

Even if you are unable to attend the convention in-person, don't worry, you can join us virtually and view from the comfort of your own home! Virtual live and recorded streaming of many of the clinics being offered at a reasonable price for "Virtual Fare" registrants. Virtual clinic coverage will also be available for in-person registered attendees at no additional cost. The clinics will be available for on-line viewing for a limited period following the convention. Virtual attendees will also be provided with links to attend Zoom chat sessions to interact with several of the clinicians following their presentations.

[Click here](#) for all levels of convention registration.

NMRA's Partnership Program



PARTNERSHIP PROGRAM

NMRA members can log in and click on the **Benefits** tab to view the **NMRA Partnership Program**. Please patronize all of our partners for some fantastic discounts as an NMRA member!

<p>CatzPaw Innovations Clever Models, LLC Coastmans Scenic Products CMR Products, LLC Conowingo Models* Daylight Sales (Merchandise) Deepwoods Software Deluxe Materials Digikeijs Dwarvin Enterprises, Ltd East Coast Circuits Feight Studios Gatorfoam Great Decals! Green Frog Productions Hot Wire Foam Factory K.I.S.S. Method, Inc. LaBelle Woodworking Co. LARC Products</p>	<p>Logic Rail Technologies MAC Rail Micro-Mark Mine Mount Models miniprints MRC (Model Rectifier Corp) Model Train Catalogue Modelers Decals & Paint Motrak Models Nick and Nora Designs Northlandz NScale Works by Mike Holly Old West Scenery Ram Track RR-CirKits Scale Model Plans Scenery Solutions Showcase Miniatures</p>	<p>Team Track Models The N Scale Architech The Old Depot Gallery Tichy Train Group Touch of the Brush Model Weathering Train Installations, LLC Train Show, Inc. Trainmasters TV/Model Railroad Hobbyist Store TRAINZ.com TSG Multimedia UGEARS USA Airbrush Supply/ Badger Airbrush WiFi Model Railroad, LLC</p>
--	--	---

[New Partners in **RED***]

Feb 2023

Partnership Program

The NMRA Partnership Program is a member benefit that truly has a tangible payback. We've partnered with model railroad manufacturers of all sizes, giving them exposure on our website in return for receiving generous discounts for NMRA

members all year long. Some provide members with special codes, others prefer a phone or email order, but all appreciate the additional business from our members. And of course, our members appreciate the extra savings...savings that can actually pay the cost of NMRA membership! **Be sure to check back often as new Partners are being added all the time.**

NMRA@HOME

A Manual Hill Brake

Featured in the Division Business Car Column appearing in the February 2023 issue of NMRA Magazine.

Gary Reynolds, MMR® shares his solution to prevent cars from rolling on a siding or interchange that has a grade. Gary's article appeared in the Niagara Frontier Region's Western New York Division newsletter, *The Lantern*.



The Hometown Challenge

Featured in the Division Business Car Column appearing in the February 2023 issue of NMRA Magazine.

In each issue of the *Potomac Flyer*, the newsletter of the Mid-Eastern Region's Potomac Division, the editor issues a challenge to provide photos and descriptions on a theme. In the Aug-Sep 2022 issue, the challenge was to provide modeled scenes that were inspired by the towns they grew up in, lived in, or worked in.

Red Maple Trees

Featured in the Division Business Car Column appearing in the February 2023 issue of NMRA Magazine.

Jim Osborn, MMR® shows you how to make red maple trees using ground up leaves from real red maple trees instead of ground foam. Jim's article appeared in *The Semaphore*, the newsletter of the Midwest Region's Fox Valley Division.



A Layout Based on a Boy's Life Article from 1959

Featured in the Division Business Car Column appearing in the February 2023 issue of NMRA Magazine.

Ed and Kathy Horvath built a layout based on an article in *Boy's Life* that Ed remembered as a boy scout in the late 1950's. Their quest appears in the *Susquehanna Sidetracks*, the newsletter of the Mid-Eastern Region's Susquehanna Division.

Steve Austin's On30 Elkhorn Iron & Timber

Featured in the Division Business Car Column appearing in the February 2023 issue of NMRA Magazine

We take a virtual tour of Steve Austin's fabulous On30 Elkhorn Iron & Timber layout in two separate publications.



A Tour of JL Innovative Design

Featured in the Division Business Car Column appearing in the February 2023 issue of NMRA Magazine.

The Mid Central Region's Division 12, Niagara Frontier Region's Western New York Division, and Northeastern Region's Lakeshores Division toured the offices of JL Innovative Design, a manufacturer of structure kits,

billboards, signs, vehicles, and details. The three divisions also enjoyed Polish food for lunch catered by a food truck. You can read about the trip in the *Builder's Plate*, the newsletter of Division 12.

The ***Division Business Car*** column appears in even-numbered months in NMRA Magazine. It's loaded with great modeling ideas, plus useful information that can help make your Division, Region, or 100% NMRA Club even better. The information comes from articles published in Region, Division, and club newsletters. The best of these articles are posted on the NMRA website. You can read the entire archive, from as far back as 2011 right up to the latest posting, by clicking [here](#).

Previous issues of the ***NMRA Turntable*** are available on the Turntable Archives page. You must first log in as a member at: nmra.org After you are in the members-only section, then you must hover over 'Publications' on the menu bar, then 'NMRA Turntable', and then click on one of the list of back issues.

Editor: [Paul Voelker, HLM](#)

Executive Editor: [Rick Coble](#)

The NMRA Turntable is an official monthly production of the National Model Railroad Association, Inc. Publishing Department ([Riley Triggs](#) Manager). Its purpose is to introduce NMRA members to a selection of instructional videos and online publications that they may find of interest. If you know of an NMRA member who is not receiving this mailing, please direct them to [here](#) to update their email address. If you no longer wish to receive these mailings, please don't mark them as SPAM. Instead, click the Safe Unsubscribe link at the bottom of this page. ©2021 National Model Railroad Association, Inc., P.O. Box 1328, Soddy Daisy TN 37384.

